



DK - 2600

Diaphragm Seal with extended process flanges

Introduction

- Pressure range ...160 bar
- temperature - 60 °C ...200 °C
- Class 150 to 900
- NPS 1/2" to 2"1/2

Applications

- Oil & Gas / Chemical
- Water & Waste water
- Energy
- Process technic



Technical Data

This diaphragm seal with flanged process connection are used to protect pressure gauges from high temperatures, aggressive or corrosive fluids.

The design of the extended process flange allows direct mounting on standardized flange connection of pipes or tanks.

The process flange has through holes.

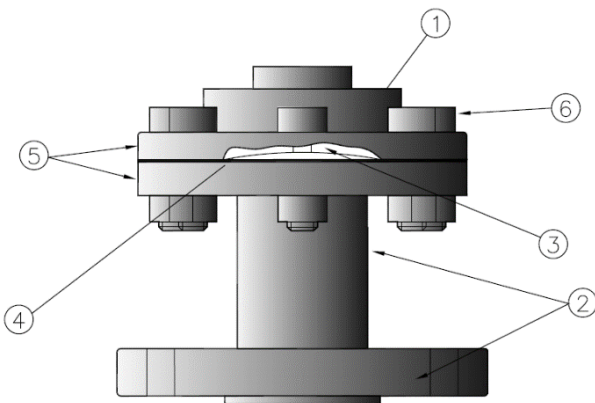
Different diaphragm materials can be selected to adapt the seal to various applications and process fluids.

The filling fluid of the measuring system has to be chosen compatible to the application.

Filling liquids LRS1 : -15 °C..+ 150 °C
 LRS9 : -40 °C..+ 200 °C
 Other liquids on request

Mounting	Direct
Process flange	316L with extension
Flanged types	ASME B16.5 / EN 1759-1 : class 150 to 900, NPS 1/2" to 2"1/2
Diaphragm	316L Option (see ordering table)

Materials



	NO.	2601	2602	2603
Upper part	①	316L		
Process flange with extension	②	316L		
Diaphragm	③	316L		
Gaskets	④	PTFE		
Fixing flanges	⑤	304 SS	-	
screws / nuts	⑥	304 SS		

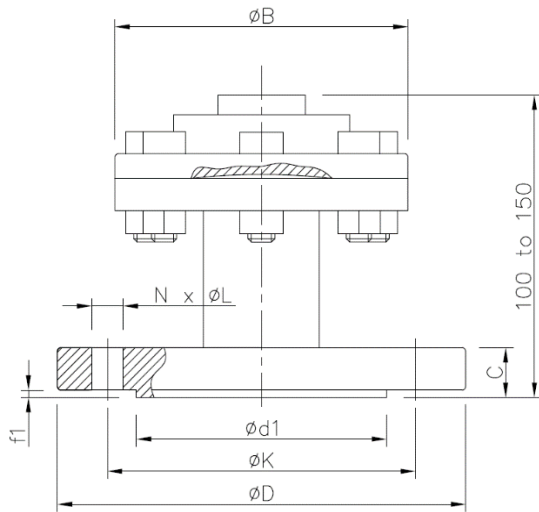




DK - 2600

Diaphragm Seal with extended process flanges

Dimension (mm)



Pressure limitations and dimensions of the upper part

Type	Min. pressure ranges		P _{max}	Φ B
	Gauge	Compound		
2601	0 ... 10 bar	-1 ... 9 bar	160 bar	85
2602	0 ... 1 bar	-1 ... 3 bar	40 bar	85
2603	0 ... 0.16 bar	-1 ... 0 bar	25 bar	120

Flange dimensions(mm) ANSI B 16.5 / EN 1759-1

DN	Class	Φ D	Φ K	Φ L	N	EN1759-1		ANSI B16-5		Φ d1	Weight in kg		
						c	f1	c	f1		2601	2602	2603
1/2"	150	89	60.3	15.9	4	11.1	1.6	13.2	2	35.1	-	1.6	1.9
	300	95	66.7	15.9	4	14.3	1.6	14.7	2	35.1	1.9	-	-
	600	95	66.7	15.9	4	20.7	6.4	21.3	7	35.1	2.1	-	-
	900	121	82.6	22.2	4	28.6	6.4	29.3	7	35.1	3	-	-
3/4"	150	99	69.8	15.8	4	12.7	1.6	14.7	2	42.9	-	1.8	2.1
	300	117	82.6	19	4	15.9	1.6	16.3	2	42.9	2.4	-	-
	600	117	82.6	19	4	22.3	6.4	22.9	7	42.9	2.6	-	-
	900	130	88.9	22.2	4	31.8	6.4	32.4	7	42.9	2.7	-	-
1"	150	108	79.4	15.9	4	14.3	1.6	16.3	2	50.8	-	2.1	1.4
	300	124	88.9	19	4	17.5	1.6	17.9	2	50.8	2.7	-	-
	600	124	88.9	19	4	23.9	6.4	24.5	7	50.8	2.9	-	-
	900	149	101.6	25.4	4	35	6.4	35.6	7	50.8	4.9	-	-
1 1/4"	150	117	88.9	15.9	4	15.9	1.6	17.9	2	63.5	-	2.4	2.7
1 1/2"	150	127	98.4	15.9	4	17.5	1.6	19.5	2	73.2	-	2.7	3
2"	150	152	120.6	19	4	19	1.6	21.1	2	91.9	-	-	3.9
2 1/2"	150	178	139.7	19	4	22.2	1.6	24.3	2	104.6	-	-	5.5



DK - 2600

Diaphragm Seal with extended process flanges

Ordering details

	DK		-	2					-		
Model											
Low pressure type		2601									
Medium pressure type		2602									
High pressure type		2603									
Upper part material											
316L				2							
Instrument connection											
1/2" PF					A						
1/2" NPT					B						
1/4" PF					C						
1/4" NPT					D						
Diaphragm material											
316L						1					
Tantalum						2					
Hastelloy C						3					
Monel 400						4					
Diaphragm coating											
no coating							0				
PTFE (Thin anti-sticking coating. Limited corrosion resistance)							1				
Process flange PN/Class											
ANSI B 16-5/EN 1759-1											
Class 150								1			
class 300								2			
Class 600								3			
Class 900								4			
DN Ansi b16-5 / EN 1759-1											
1/2"									0		
3/4"									1		
1"									2		
1" 1/4									3		
1"1/2									4		
2"									5		
2" 1/2									6		
Process flange MATERIAL											
Steel										0	
316L										1	
Hastelloy C										2	
Monel 400										3	
PVC max.10 bar / 40 °C										4	
PTFE max.6 bar / 80 °C										5	
Process flange coating											
no coating											0
PTFE (Thin anti-sticking coating. Limited corrosion resistance)											1